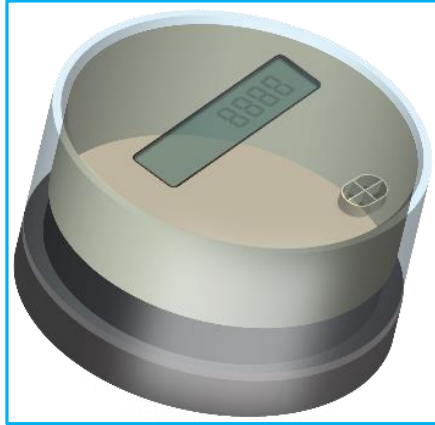
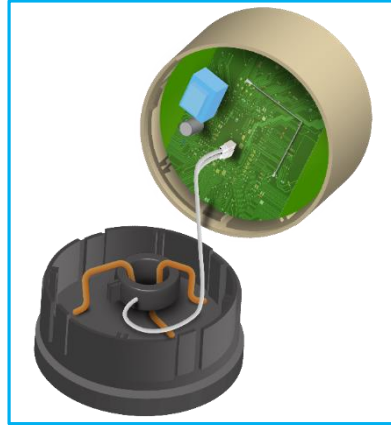


Interconnect Solutions for Smart Meters

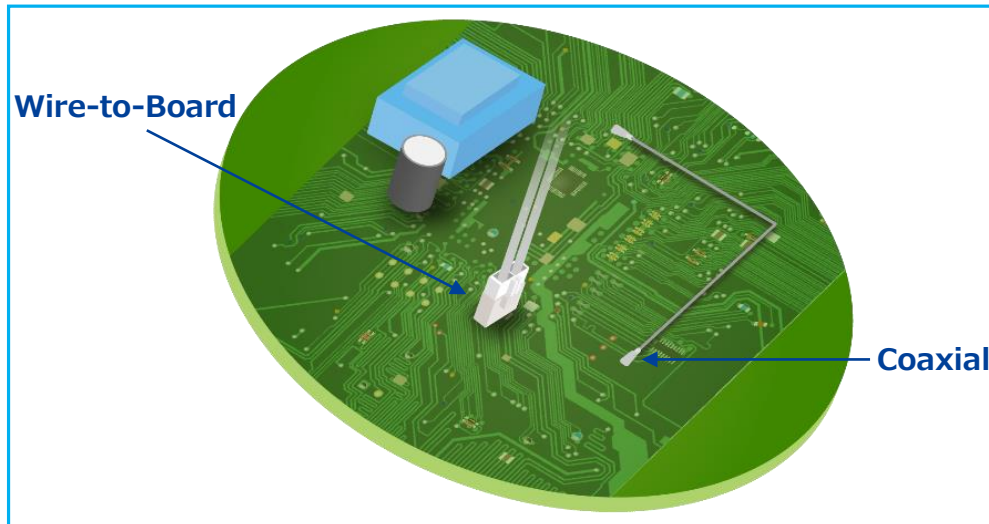
▼ Smart Meter Exterior



▼ Smart Meter Configuration



▼ Smart Meter Board



Smart Meter Connector Lineup

Wire-to-Board

Signal



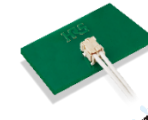
DF57H

Rated Current : 3A Max.
Rated Voltage : 50V AC/DC,
100V AC/DC (Middle Pin of
3pos. Removed)
Pitch : 1.2mm
No. of Pos. : 2, 3, 4, 5, 6
AWG : 26-34



DF59

Rated Current : 3A
Rated Voltage : 230V AC/DC,
350AC/DC (Without Center
Contact)
Pitch : 2.0mm
No. of Pos. : 2, 3, 4
AWG : 22



DF61Y

Rated Current : 4A Max.
Rated Voltage : 350V AC/DC
Pitch : 2.2mm
No. of Pos. : 2
AWG : 24-28



DF50/DF50A

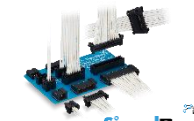
Rated Current : 1A Max.
Rated Voltage : 100V AC/DC
Pitch : 1.0mm
No. of Pos. :
20, 30, 40, 50 (DF50)
2-16 (DF50A)
AWG : 26-32

Signal



DF13

Rated Current : 1A
Rated Voltage : 150V AC/DC
Pitch : 1.25mm
No. of Pos. :
2-15 (1 Row)
10, 20, 30, 40 (2 Rows)
AWG : 26-32



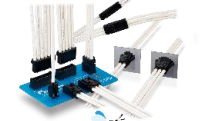
DF51

Rated Current : 3A Max.
Rated Voltage : 250V AC/DC
Pitch : 2.0mm
No. of Pos. :
2-6 (1 Row)
4-30 (2 Rows)
AWG : 22-30



DF33C

Rated Current : 5A Max.
Rated Voltage : 500V AC/DC
Pitch : 3.3mm
No. of Pos. :
2-6 (1 Row)
4-12 (2 Rows)
AWG : 20~22



DF63

Rated Current : 15A Max.
Rated Voltage : 630V AC/DC
Pitch : 3.96
No. of Pos. : 1-6
AWG : 16-22

Power

Coaxial

RF Antenna



U.FL

Frequency : DC-8GHz
V.S.W.R. : 1.7 Max.
Mated Height : 1.9mm
2.3mm, 2.4mm

Coaxial Switch for Testing



MS-156C

Frequency : DC-11GHz
V.S.W.R. : 1.5 Max.
Mated Height : 1.35mm



MS-180

Frequency : DC-11GHz
V.S.W.R. : 1.4 Max.
Mated Height : 0.85mm