

ODU MEDI-SNAP® SIZE 2 – 7 PIN

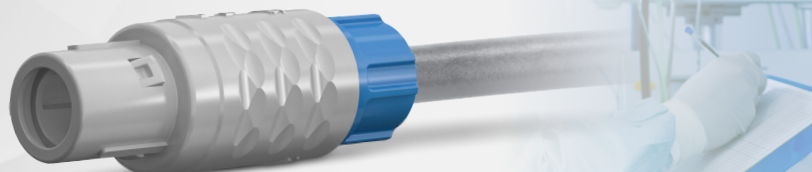


KEY FEATURES

The ODU MEDI-SNAP® with plastic housing in size 2, 7 pin is keyed by pin and groove.

ODU MEDI-SNAP® 7-pin in size 2 offers a higher nominal current compared to a comparable connector in size 1 and is therefore suitable for higher loading.

Available in both soldered and PCB options to meet the individual requirements of our customers.



Number of contacts		Contact type	Contact diameter insert	Single contact nominal current	Nominal current insert	Clearance and creepage distance	Test voltage EIA	Termination	
		Termination	mm	A	A	contact to contact mm	kV RMS	AWG	mm ²
0	7	Solder	1.3	12	9	0.9	0.95	18	1
		PCB						–	–