

# Jumper

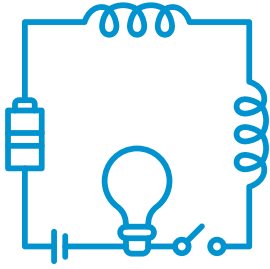
TFT's Jumperz line offers a diverse range of options suited for various applications, all with high volume capabilities to meet demanding needs. From basic models to advanced features, TFT ensures affordability without compromising quality, making them an ideal choice for projects seeking reliable performance. With TFT's Jumperz, users can expect versatility, durability, and exceptional value, catering to a wide array of connectivity requirements.

Case size	Max Current (A)	Max Resistance ( $\Omega$ )
01005	1	0.035
	3	0.005
	8	0.002
0201	8	0.001
0402	20	0.0005
0603	26	0.0002
0805	35	0.0002
1206	40	0.0002

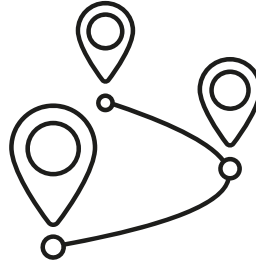
If you do not see your exact specifications, please contact our sales department.

TFT's Multiphysics Jumpers have a wide variety of capabilities.

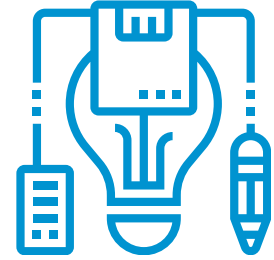
- **Zero-ohm current:** The Jumper functions as a current carrying device that acts more like a wire than a resistor, allowing electrons to flow freely through the circuit.
- **Mechanical support:** Jumpers have low CTE (coefficient of thermal expansion) that helps with physical reinforcement. The jumper can be used as a stiffener to improve the mechanical properties of a PCB.
- **Thermal management:** The materials of the jumper allows it to dissipate heat at a faster rate.
- **Magnetic field shielding:** TFT is currently developing a magnetic nano crystalline foil for h-field shielding. This will help protect against any interference that an external magnetic field might cause.



**Temporary Circuit Modification**



**Signal Routing**



**Prototype Development**

Since its inception in 1979 and joining the Juneway Group in 2013, TFT has been leading the way as a seasoned manufacturer of high-quality electronic components. Through a steadfast dedication to quality and ingenuity, TFT has built a trusted reputation of expertise focused on serving the needs of its longstanding clients and has broadened its scope and reach.

A comprehensive product portfolio allows TFT to supply diverse industries, showcasing an ability to provide custom project solutions. TFT's cutting-edge engineering innovations ensure components meet the highest performance and reliability standards. With competitive lead times and flexible pricing structures, TFT maintains a customer-centric approach focused on responding to dynamic market trends. As a leader in component manufacturing, TFT's legacy of quality and innovation continues to shape the future.