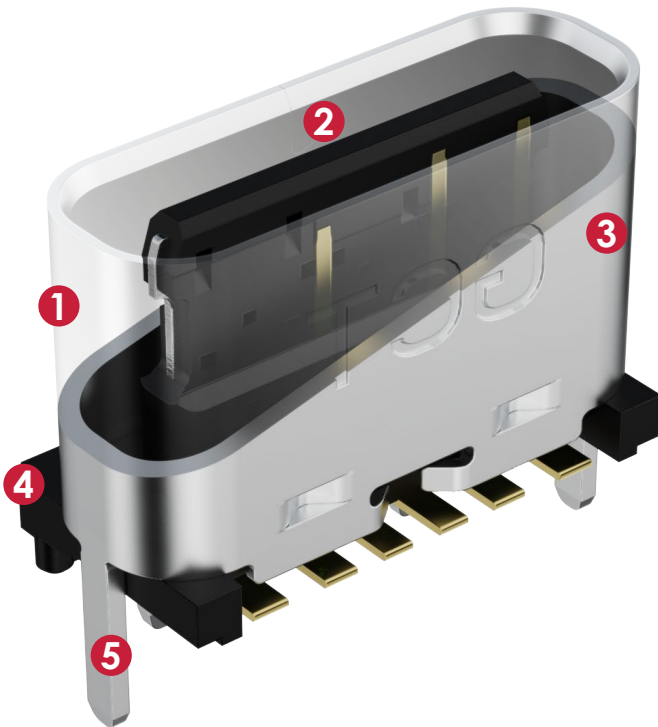


6 Pin USB Type-C

Power-only USB4140

- ⓐ Stable base with locating pegs
- ⓐ Three shell stake options for different PCB thicknesses
- ⓐ Perfect for charge-only applications



Vital Stats

Interface	Current Rating
USB C	3 Amps
No. of Contacts	Mating Cycles
6	10,000
USB Specification	Profile Above PCB
Power Only	6.50mm

- 1 Vertically mounted socket
- 2 USB C interface with 6 contacts
- 3 6.50mm profile
- 4 Stable base with location pegs
- 5 0.7, 1.7 & 2.3mm shell stake options

Applications

Docking Stations
EPOS Terminals
Dental Equipment
Portable Electronics
Audio Equipment



gct.co/connector/usb4140