

Innovative Engineering Solutions



Selection Guide

ITE POWER SUPPLIES



Innovative, Reliable, and Inexpensive

Unsurpassed quality in design and manufacturing for a wide range of applications.

Wall Adapters and Desktop Power Supplies are available from 6W to 300W meeting the DOE Level VI rating. Open frame, enclosed and custom power supplies, from 12W to 800W. Custom design teams are in place to meet your unique requirements.

EXTERNAL

- DOE Level VI Efficiency Rating
- Universal Input: 90 ~ 264 Vac, 47/63 Hz
- UL/cUL/TUV (Nemko) Safety Approved
- Variety of Input/output connectors
- Lightweight and Compact

INTERNAL

- DOE Level VI Efficiency Rating (Green Rated)
- Universal Input: 90 ~ 264 Vac, 47/63 Hz
- UL/CSA/EN 60950-1, 2nd edition (ITE)
- Small Footprint
- Lifetime warranty

ITE Adapters & Desktop Power Supplies

6–12 Watts



L6R06H Series

- Up to **6 Watts** - Class II
- Output: 5 to 24 Vdc
- DOE Level VI Compliant
- USB Type A Output Avail.
- 1.65" x 1.52" x 0.93"



L6R12H Series

- Up to **12 Watts** - Class II
- Output: 5 to 12 Vdc
- DOE Level VI Compliant
- DC Output Cable Options
- 2.91" x 1.14" x 1.89"



L6R12 Series

- Up to **12 Watts** - Class II
- Output: 5 to 36 Vdc
- DOE Level VI Compliant
- USB Type A Output Avail.
- 2.32" x 1.60" x 1.00"



ICM12 Series

- Up to **12 Watts** - Class II
- Output: 5 to 36 Vdc
- DOE Level VI Compliant
- Int'l AC Adapters Avail.
- 2.32" x 1.60" x 1.24"

15–18 Watts



L6R15 Series

- Up to **15 Watts** - Class II
- Output: 5 to 8 Vdc
- DOE Level VI Compliant
- DC Output Cable Options
- 2.80" x 1.70" x 1.14"



ICM15 Series

- Up to **15 Watts** - Class II
- Output: 9 to 36 Vdc
- DOE Level VI Compliant
- Int'l AC Adapters Avail.
- 2.80" x 1.70" x 1.20"



L6R18 Series

- Up to **18 Watts** - Class II
- Output: 5 to 36 Vdc
- DOE Level VI Compliant
- DC Output Cable Options
- 2.80" x 1.70" x 1.14"



ICM18 Series

- Up to **18 Watts** - Class II
- Output: 9 to 36 Vdc
- DOE Level VI Compliant
- Int'l AC Adapters Avail.
- 2.80" x 1.70" x 1.20"



L6R18D Series

- Up to **18 Watts** - Class II
- Output: 9 to 36 Vdc
- DOE Level VI Compliant
- DC Output Cable Options
- 3.62" x 1.79" x 1.14"

24–30 Watts



L6R24 Series

- Up to **24 Watts** - Class II
- Output: 9 to 36 Vdc
- DOE Level VI Compliant
- DC Output Cable Options
- 2.80" x 1.70" x 1.14"



ICM24 Series

- Up to **24 Watts** - Class II
- Output: 9 to 36 Vdc
- DOE Level VI Compliant
- Int'l AC Adapters Avail.
- 2.80" x 1.70" x 1.20"



L6R24D Series

- Up to **24 Watts** - Class II
- Output: 9 to 36 Vdc
- DOE Level VI Compliant
- DC Output Cable Options
- 3.62" x 1.79" x 1.14"



L6R30 Series

- Up to **30 Watts** - Class II
- Output: 9 to 36 Vdc
- DOE Level VI Compliant
- DC Output Cable Options
- 2.80" x 1.70" x 1.14"



ICM30 Series

- Up to **30 Watts** - Class II
- Output: 9 to 36 Vdc
- DOE Level VI Compliant
- Int'l AC Adapters Avail.
- 2.80" x 1.70" x 1.20"



L6R30D Series

- Up to **30 Watts** - Class II
- Output: 9 to 36 Vdc
- DOE Level VI Compliant
- DC Output Cable Options
- 3.62" x 1.79" x 1.14"

ITE Adapters & Desktop Power Supplies

36–48 Watts



L6R36 Series

- Up to **36 Watts** - Class II
- Output: 9 to 36 Vdc
- DOE Level VI Compliant
- DC Output Cable Options
- 3.82" x 1.77" x 1.36"



ICM36 Series

- Up to **36 Watts** - Class II
- Output: 9 to 36 Vdc
- DOE Level VI Compliant
- Int'l AC Adapters Avail.
- 3.82" x 1.77" x 1.36"



L6R36D Series

- Up to **36 Watts** - Class II
- Output: 9 to 36 Vdc
- DOE Level VI Compliant
- DC Output Cable Options
- 3.82" x 1.77" x 1.36"



L6R36H Series

- Up to **36 Watts** - Class II
- Output: 5 to 48 Vdc
- DOE Level VI Compliant
- DC Output Cable Options
- 2.95" x 1.34" x 2.14"



DT040AF Series

- Up to **48W** - Class II
- Output: 12, 15, 24, 48 Vdc
- DOE Level VI Compliant
- 10-Year Warranty
- 2.29" X 4.73" X 1.66"



L6R48 Series

- Up to **48 Watts** - Class II
- Output: 9 to 36 Vdc
- DOE Level VI Compliant
- DC Output Cable Options
- 3.82" x 1.77" x 1.36"



L6R48D Series

- Up to **48 Watts** - Class II
- Output: 9 to 36 Vdc
- DOE Level VI Compliant
- DC Output Cable Options
- 4.72" x 2.01" x 1.34"

50–80 Watts



L6R50D Series

- Up to **36 Watts** - Class II
- Output: 9 to 36 Vdc
- DOE Level VI Compliant
- DC Output Cable Options
- 3.82" x 1.77" x 1.36"



DT060AF Series

- Up to **60W** - Class II
- Output: 12, 15, 24, 48 Vdc
- DOE Level VI Compliant
- **Lifetime Warranty**
- 2.56" X 5.31" X 1.57"



L6R60 Series

- Up to **60 Watts** - Class II
- Output: 9 to 36 Vdc
- DOE Level VI Compliant
- Int'l AC Adapters Avail.
- 3.82" x 1.77" x 1.36"



ICM60 Series

- Up to **60 Watts** - Class II
- Output: 9 to 36 Vdc
- DOE Level VI Compliant
- Int'l AC Adapters Avail.
- 3.82" x 1.77" x 1.36"



L6R60D Series

- Up to **60 Watts** - Class II
- Output: 9 to 36 Vdc
- DOE Level VI Compliant
- DC Output Cable Options
- 3.82" x 1.77" x 1.36"



DT080AF Series

- Up to **76W** - Class I
- Output: 12, 15, 24, 48 Vdc
- DOE Level VI Compliant
- **Lifetime Warranty**
- 2.83" x 5.70" x 1.65"

90–160 Watts



L6R90D Series

- Up to **90 Watts** - Class I
- Output: 12 to 56 Vdc
- DOE Level VI Compliant
- DC Output Cable Options
- 5.94" x 2.52" x 1.42"



L6R120D Series

- Up to **120 Watts** - Class I
- Output: 12 to 56 Vdc
- DOE Level VI Compliant
- DC Output Cable Options
- 6.61" x 2.60" x 1.54"



L6R160D Series

- Up to **120 Watts** - Class I
- Output: 12 to 56 Vdc
- DOE Level VI Compliant
- 4-Pin DIN Connector
- 6.89" x 2.91" x 1.65"

200–300 Watts



L6R200D Series

- Up to **200 Watts** - Class I
- Output: 12 to 56 Vdc
- DOE Level VI Compliant
- 4-Pin DIN Connector
- 7.20" x 3.19" x 1.65"



L6R250D Series

- Up to **250 Watts** - Class I
- Output: 12 to 56 Vdc
- DOE Level VI Compliant
- 6-Pin (2x3) Connector
- 8.03" x 3.70" x 1.71"



L6R300D Series

- Up to **300 Watts** - Class I
- Output: 12 to 56 Vdc
- DOE Level VI Compliant
- 6-Pin (2x3) Connector
- 10.00" x 4.57" x 1.85"

Open Frame & Enclosed ITE Power Supplies

12–55 Watts



DA12P Series

- Up to **12 Watts** - Class II
- Output: 3.3 - 24 Vdc
- DOE Level VI, ErP Stage 2
- **2-Year Warranty**
- 2.56" x 1.76" x 0.95"



DA24P Series

- Up to **24 Watts** - Class II
- Output: 3.3 - 48 Vdc
- DOE Level VI, ErP Stage 2
- **2-Year Warranty**
- 2.75" x 1.89" x 1.02"



DFH030 Series

- **30W/15W** @50°/70°C
- 45W Peak, Ideal for in-rush/ motor-starting loads
- Output: 12, 15, 24, 48 Vdc
- 1.57" x 2.76" x 0.9"



DG040 Series

- Up to **12 Watts** - Class II
- Output: 5 to 36 Vdc
- DOE Level VI Compliant
- Int'l AC Adapters Avail.
- 2.32" x 1.60" x 1.24"



DY040 Series

- **45W/22.5W** @50°/70°C
- 60W Peak Power (8 Sec.)
- Multiple Output Options
- Efficiencies up to 85%
- 2.00" x 4.00" x 1.10"



TMG-Z050 Series

- **50W** @ -20 to 50°C
- Output: 12Vdc
- UL 1741 SA LVRT/HVRT & LFRT/HFRT Compliant
- 2.00" x 4.00" x 1.10"



DZ065/DZ065V Series

- **55W/27.5W** @50°/70°C
- 90W Peak Power (8 Sec.)
- Output: 3.3 - 48Vdc
- Efficiencies up to 87%
- 2.00" x 4.00" x 1.18"

60–85 Watts



DGK060 Series

- **60W/30W** @50°/70°C
- 85W Peak Power (8 Sec.)
- Output: 12 to 60Vdc
- Efficiencies of 90% typ.
- 2.00" x 4.00" x 0.97"



DHF060 Series

- **60W/30W** @50°/70°C
- 90W Peak, Ideal for in-rush/ motor-starting loads
- Output: 12 - 48 Vdc
- 2.00" x 3.17" x 0.95"



DY060 Series

- **60W/30W** @50°/70°C
- Multiple Output Options
- 90W Peak Power (8 Sec.)
- Efficiencies up to 87%
- 2.50" x 4.50" x 1.18"



DYL060 Series

- **60W/30W** @50°/70°C
- Multiple Output Options
- 90W Peak Output (8 Sec.)
- Efficiencies up to 87%
- 3.00" x 5.00" x 1.18"



DY075 Series

- **75W/37.5W** @50°/70°C
- Multiple Output Options
- 120W Peak Output (8 Sec.)
- Efficiencies up to 87%
- 3.00" x 5.00" x 1.18"



DHF080 Series

- **80W/40W** @50°/70°C
- 110W Peak, Ideal for in-rush/ motor-starting loads
- Output: 12, 15, 24 Vdc
- 2.00" x 4.00" x 1.12"



DZ080 Series

- **85W/42.5W** @50°/70°C
- Multiple Output Options
- 135W Peak Output (8 Sec.)
- Efficiencies up to 87%
- 2.50" x 4.50" x 1.18"

100–150 Watts



DHF100 Series

- **100W/50W** @50°/70°C
- 110W Peak, Ideal for in-rush/ motor-starting loads
- Output: 12, 15, 24 Vdc
- 2.00" x 4.00" x 1.12"



DZ100 Series

- **100W/50W** @50°/70°C
- Multiple Output Options
- 130W Peak Output (8 Sec.)
- Efficiencies up to 87%
- 3.00" x 5.00" x 1.18"



DY110 Series

- **110W/55W** @50°/70°C
- Multiple Output Options
- 160W Peak Output (8 Sec.)
- Efficiencies up to 87%
- 3.50" x 6.00" x 1.42"



DG120 Series

- **120W/60W** @50°/70°C
- Output: 12 to 48 Vdc
- Built-in PFC
- Efficiencies \geq 90% (typ.)
- 2.00" x 4.00" x 1.26"



DV120 Series

- **120W/60W** @50°/70°C
- 180W w/10CFM Forced Air
- Output: 12 & 24 Vdc & Fan
- Built-in PFC & Fan Output
- 2.00" x 4.00" x 1.26"



DP150 Series

- **150W/75W** @50°/70°C
- Output: 12-48 Vdc w/+5VSB
- Built-in PFC & Fan Output
- Remote On/Off & Sense
- 3.00" x 5.00" x 1.07"



DZ150 Series

- **150W/75W** @50°/70°C
- 220W Peak Power (8 Sec.)
- Multiple Output Options
- Built-in PFC, Eff. up to 88%
- 6.80" x 3.80" x 1.50"

Open Frame & Enclosed ITE Power Supplies

160–200 Watts



DG160 Series

- **160W/80W** @ 50°/70°C
- 240W w/18CFM Forced Air
- Output: 12 to 48 Vdc
- Built-in PFC, 90% Eff. (typ.)
- 3.00" x 5.00" x 1.44"



DG200 Series

- **200W/100W** @ 50°/65°C
- 230W w/18CFM Forced Air
- Output: 12 to 48 Vdc
- Built-in PFC, 90% Eff. (typ.)
- 3.00" x 5.00" x 1.50"



DV200 Series

- **200W/100W** @ 50°/70°C
- 300W w/18CFM Forced Air
- Output: 12, 24 Vdc & Fan
- Built-in PFC
- 3.00" x 5.00" x 1.38"



DE300 Series

- **300 Watts** @ 65°C
- Output: 12 to 48 Vdc
- Efficiencies up to 91%
- Built-in PFC & Fan
- 3.00" x 5.00" x 2.08"

300–400 Watts



DG300 Series

- **300W/150W** @ 50°/70°C
- 360W w/18CFM Forced Air
- Output: 12 - 60 Vdc
- Built-in PFC, Eff. up to 91%
- 4.20" x 8.00" x 1.65"



DP300 Series

- **300W/150W** @ 50°/70°C
- Output: 12, 24 Vdc w/+5VSB
- 480W Peak, Built-in PFC
- Remote On/Off & Sense
- 6.57" x 3.74" x 1.46"



DV300 Series

- **300W/150W** @ 50°/70°C
- 400W w/33CFM Forced Air
- Output: 12, 24 Vdc & Fan
- Built-in PFC, PF > 0.93
- 4.00" x 6.00" x 1.38"



DP400 Series

- **400W/200W** @ 50°/70°C
- Output: 12-48 Vdc w/+5VSB
- Built-in PFC, Eff. ≥ 89%
- Remote On/Off & Sense
- 4.00" x 7.00" x 1.50"

500–800 Watts



DF500 Series

- **500W**, 1kW Peak Load
- Output: 12, 24 & 48 Vdc
- Built-in PFC
- Efficiencies up to 90%
- 7.50" x 4.50" x 1.65"



TMG-F60 Series

- **600W**, 1kW Peak Load
- Output: 12 - 48 Vdc
- Built-in PFC
- Efficiencies up to 90%
- 10.51" x 5.00" x 2.95"



TMG-F80 Series

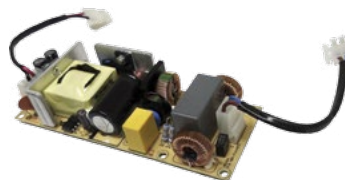
- **800W**, 1kW Peak Load
- Output: 12 - 48 Vdc
- Built-in PFC, Eff. to 90%
- Built-in Cooling
- 10.51" x 5.910" x 2.95"

Custom Solution Applications Based on Your Needs

Innovative Engineering Solutions is more than just a slogan. Our engineers work with you to design the ideal solution for your power supply needs. Manufactured to exacting specifications. Ideal for your most critical power requirements.

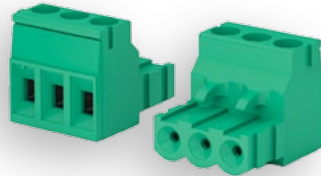
Curtis offers standard and custom solutions across a variety of applications and industries.

- Appliance
- Automotive
- Electronic
- Medical
- U.S. Military
- Gaming
- Kiosks / POS



Family of Products

- Power Supplies
 - ITE & Medical
 - Open Frame
 - Enclosed
 - External Adapters
 - Desktop
- Terminal Blocks
 - Barrier Style
 - PCB Mounted
 - Custom Design
- EMI/RFI Filters
 - Single Phase
 - 3-Phase
 - DC
 - Military
 - Custom Design
- DC-DC Converters
 - 1 - 350 Watts



2400 S. 43rd St.
Milwaukee, WI 53219
1-800-657-0853
tri-mag.com / curtisind.com

