

## Datamate T-Contact Female Power Contact for 2mm Pitch

Pushing the boundaries on signal possibilities

Harwin combines field proven Datamate J-Tek connectors with the all new T-Contact to extend the boundaries of power capacity with signal connector technology.

Recognising a distinct trend towards increased power, Harwin has introduced the T-Contact which utilises a patented, 6-finger design. It is machined from a single piece of Beryllium Copper, and gold plated to provide reliable performance in demanding applications.

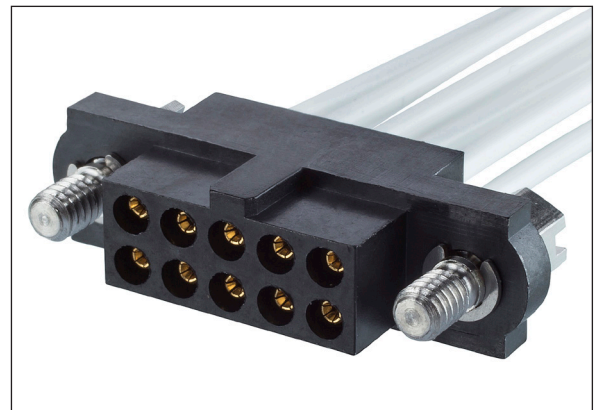
To compliment this sophisticated contact, Harwin are offering a range of two-row housings with different Jackscrews. These are stocked in depth in selected sizes from 4 to 50 position, to provide fast delivery and greater flexibility.



Up to 8.5 Amp female barrel crimp contact

### Features and Benefits

Up to 8.5A per contact	Allows for increased current capacity on a 2mm pitch system improving the Datamate SWaP (Size, weight and power) Ratio
Increased number of mating cycles, up to 1000 operations	Extended operating life of connectors when compared to existing contact system
60% more contact wipe when compared to existing signal contacts	Improves contact self-cleaning action and helps reduce surface contamination
Patented 6-finger contact design	Provides more contact points to improve resistance to shock and vibration
Dedicated stocked range of dual row mouldings with hardware	Fast turn around on off-the-shelf options with a range of hardware for design flexibility
T-Contact is compatible with existing Datamate connectors, replacing the existing female signal crimps	Can be used in Mix-Tek, J-Tek, and L-Tek product ranges where female barrel crimp contacts are currently used
Heavy Gold plating	0.76-1.00µm (30-40µ") Gold plating to meet US Military and Avionics requirements



Fits all existing female signal crimp housings

### Key Applications

Aviation	Avionics controls, Engines, Radar, UAVs, In-flight systems
Motorsport and Transport	Navigation, GPS tracking systems, sensors, communications, telemetry
Energy	Oil, gas and renewable sources
Industrial	Drives and controls, robotics, motors
Space	Satellites, CubeSat, launch systems, radar and communications
Defence and Security	Power control modules, routers, radio communications, radar, actuators, camera systems



Suitable for 22AWG cable

# Datamate T-Contact Female Power Contact for 2mm Pitch

Pushing the boundaries on signal possibilities

## Product Features



Crimp barrel accepts 22AWG wire and meet IPC-A-620 specifications

Up to 8.5 Amps per contact rating on 2mm pitch

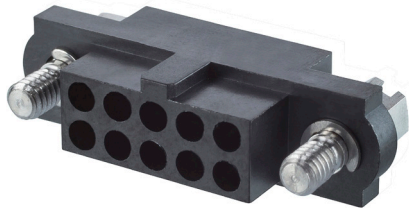
Contact retention features are the same as existing Datamate female crimp contacts

Patented 6-finger contact design improves resistance to shock (100G) and vibration (40G 6 hours, 2 hours per axis)

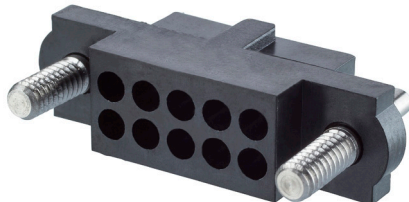
Heavy Gold plating, 0.76-1.00µm (30-40µ") to meet US Military/Avionics requirements

Extended operating life of 1000 mating cycles

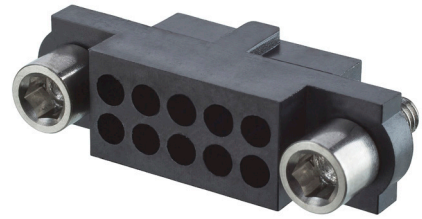
60% increased contact wipe to improve self-cleaning action and reduce surface contamination



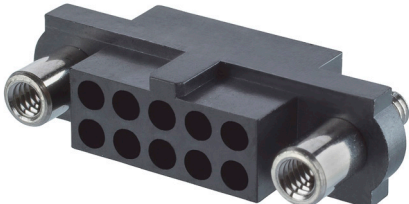
**M80-413xx98**  
Hex slotted jackscrew



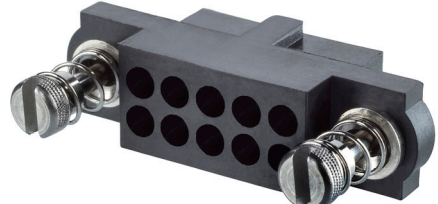
**M80-417xx98**  
Guide pin with panel mount



**M80-414xx98**  
Hex socket jackscrew



**M80-415xx98**  
Reverse fix jackscrew



**M80-418xx98**  
101Lok

# Datamate T-Contact Female Power Contact for 2mm Pitch

Pushing the boundaries on signal possibilities

**How to Order**

T-Contact sold in 100 pcs per bag



**ORDER CODE**

**M80-2060005**

**Housings**

**M80 - 4 - XX - XX - 98**

**SERIES CODE**

**NO. OF CONTACT POSITIONS**

04 to 50 (Even numbers only)

**JACKSCREW FIXING STYLE**

<b>13</b>	Hexagon Slotted jackscrews
<b>14</b>	2mm A/F Hex socket jackscrews
<b>15</b>	Reverse fix jackscrews with 3.5mm panel mount stud
<b>17</b>	Guide pin with 5mm panel mount stud
<b>18</b>	101Lok quarter-turn fixings

**Panel Mount Nuts**



**M80-2130000B**

**M80-2430000B**

**Specifications**

Electrical		Mechanical & Environmental		Physical	
Current Rating	8.5A max individual (at 25°C ambient, 4A max when all contacts electrically loaded)	No. of Operations	1000	Packaging (contact)	100 per bag
Working Voltage	800V AC/DC	Insertion Force	4N per contact	Housing	30% GF PPS, UL94V-0, black
Maximum Voltage	1200V AC/DC	Withdrawal Force	0.8N per contact	Contacts	Beryllium Copper, Gold over nickel finish
Contact Resistance	25mΩ Max	Operating Temperature Range	-55°C to +125°C	Jackscrews, Circlips	Stainless steel
Insulation Resistance	10 <sup>9</sup> MΩ	Vibration	40G for 6 hours, 2 hours per axis		
		Shock	100G for 6ms		

**Additional Literature**

[Product Training Module >>](#)

Patent Pending