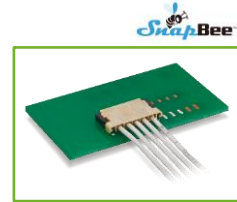
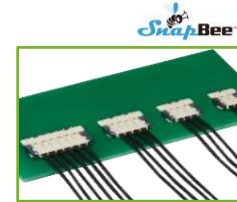


1. Cycle Computer

Wire-to-Board

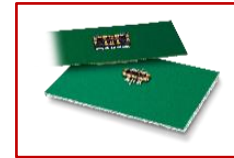


DF65
For Battery
ViSe Lock Design
Pitch : 1.7mm
Mated Height : 1.8mm
Depth : 6.3mm
No. of Pos. : 3-7
Applicable Cable :
24-28 AWG
Rated Current :
4.0A Max.

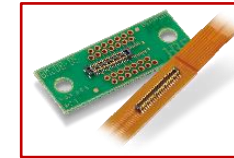


DF58
For Battery
Low Profile
ViSe Lock Design
Pitch : 1.2mm
Mated Height : 1.0mm
Depth : 4.97mm
No. of Pos. : 2-6
Applicable Cable :
28-30 AWG
Rated Current :
3.0A Max.

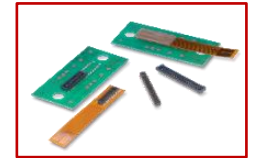
Board-to-Board



BM25
For Battery
Power Hybrid
Pitch : 0.4mm
Stacking Height :
0.7mm
Depth : 2.6mm
No. of Pos. :
4 (Signal) + 2 (Power)
Rated Current :
10.0A (Signal)
0.3A (Power)



BM20
For Display
Power Hybrid
Pitch : 0.4mm
Stacking Height :
0.6/0.8mm
Depth : 2.3mm
No. of Pos. : 10-60
Rated Current : 0.3A



DF40
For Display
Power Hybrid
Pitch : 0.4mm
Stacking Height : 1.5-4.0mm
Depth : 3.38mm
No. of Pos. : 10-120
Rated Current : 0.3A

FPC/FFC



FH34
Top & Bottom Contact
Back Flip
Pitch : 0.5mm
Height : 1.0mm
Depth : 3.8mm
No. of Pos. : 4-50
Rated Current : 0.5A



FH62/FH72
For Display
One Action Lock
Pitch : 0.25/0.3mm
Height : 1.1/0.9mm
Depth : 4.0/3.5mm
No. of Pos. :
13-61/11-31
Rated Current : 0.3A

Coaxial Switch



MS-156
High Frequency for
Testing
Size : 2.3 x 2.3mm
Height : 1.35mm
Frequency : 0-11GHz

Coaxial



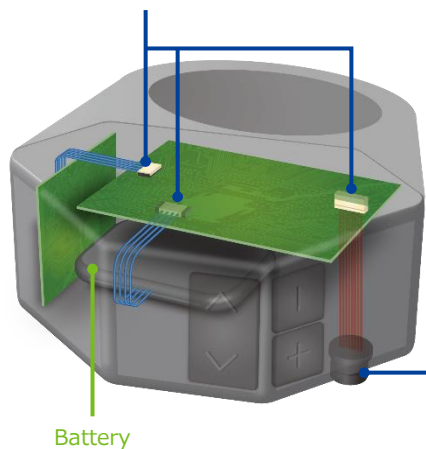
U.FL
Mated Height :
1.9mm (2.5mm Max.)
Frequency : 0-8GHz
Applicable Cable :
ø0.81/0.95/1.13/
1.32/1.37mm

Interface



CX
USB Type-C™
IPX8, IPX4 Waterproof

Wire-to-Board Connector

Waterproof Connector,
Interface Connector

Battery

2. Controller / Shift Lever

1. Cycle Computer
(Display/Battery)

4. Battery Unit

3. Front/Center/Rear Unit
(Speed Sensor, Torque Sensor)5. Drive Unit
(Rear Motor)5. Drive Unit
(Center Motor)5. Drive Unit
(Front Motor)

2. Controller / Shift Lever

Wire-to-Board

**DF13**

Mated Height : 5.8mm Max.
Pitch : 1.25mm
No. of Pos. :
2-15 (Single Row)
10-40 (Double Row)
Applicable Cable : 26-32
AWG
Rated Current : 1.0A

**DF57**

For Battery
Low Profile
Swing Lock Design
Pitch : 1.2mm
Mated Height : 1.4mm
Depth : 4.65mm
No. of Pos. : 2-6
Applicable Cable : 26-34
AWG
Rated Current : 2.5A Max.

**DF58**

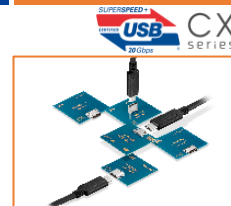
For Battery
Low Profile
ViSe Lock Design
Pitch : 1.2mm
Mated Height : 1.0mm
Depth : 4.97mm
No. of Pos. : 2-6
Applicable Cable :
28-30 AWG
Rated Current : 3.0A Max.

Waterproof

**HR30**

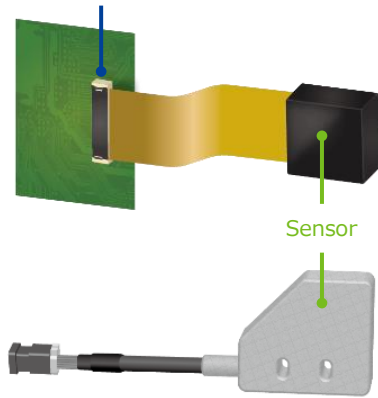
IP67/IP68 Waterproof
Push-Pull Type
No. of Pos. : 3-12
Applicable Cable : 26-30
AWG
Rated Current : 5.0A Max.

Interface

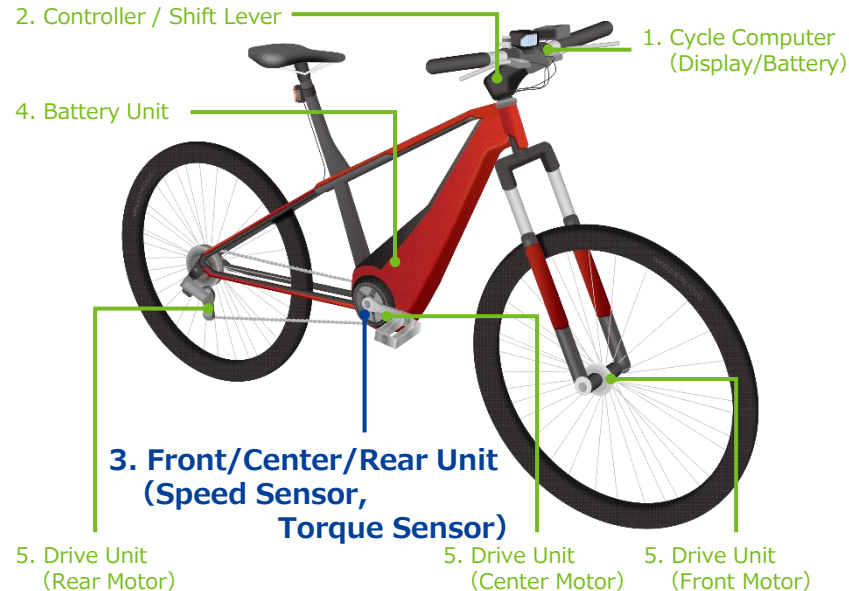
**CX**

USB Type-C™
IPX8, IPX4 Waterproof

FPC/FFC Connector



Sensor

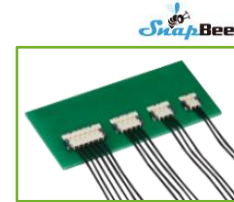


3. Front/Center/Rear Unit (Speed Sensor, Torque Sensor)

Wire-to-Board

**DF57**

For Battery
Low Profile
Swing Lock Design
Pitch : 1.2mm
Mated Height : 1.4mm
Depth : 4.65mm
No. of Pos. : 2-6
Applicable Cable : 26-34
AWG
Rated Current : 2.5A Max.

**DF58**

For Battery
Low Profile
ViSe Lock Design
Pitch : 1.2mm
Mated Height : 1.0mm
Depth : 4.97mm
No. of Pos. : 2-6
Applicable Cable : 28-30
AWG
Rated Current : 3.0A Max.

FPC/FFC

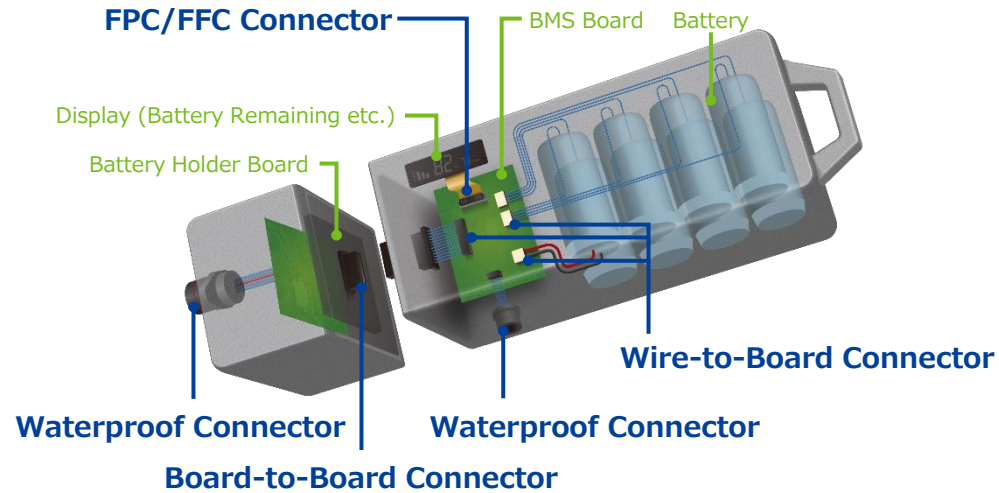
**FH34**

Top & Bottom Contact
Back Flip
Pitch : 0.5mm
Height : 1.0mm
Depth : 3.8mm
No. of Pos. : 4-50
Rated Current : 0.5A

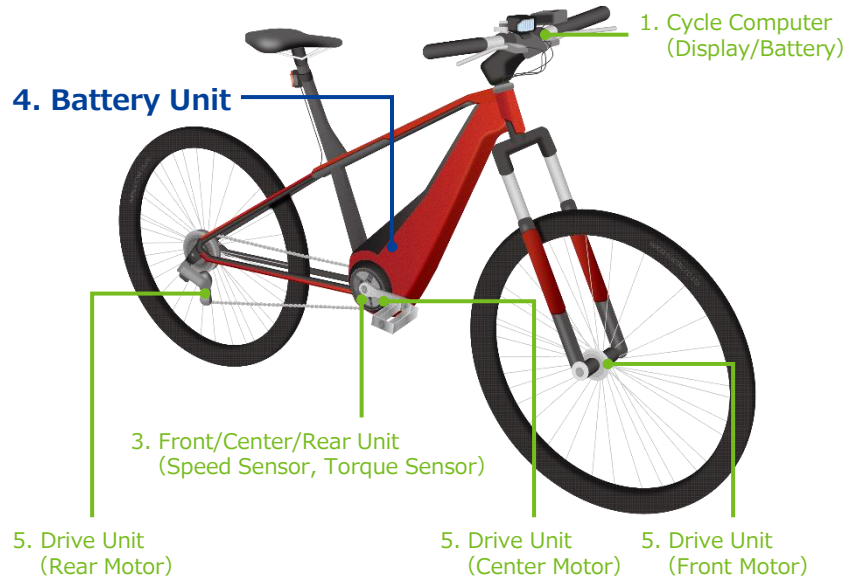
**FH62/FH72**

For Display
One Action Lock
Pitch : 0.25/0.3mm
Height : 1.1/0.9mm
Depth : 4.0/3.5mm
No. of Pos. : 13-61/11-31
Rated Current : 0.3A

4. Battery Unit



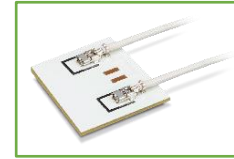
4. Battery Unit



Wire-to-Board

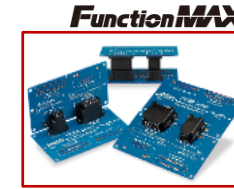


DF63
Positive Lock
In-Line Type Available
Pitch : 3.96/7.92mm
No. of Pos. : 1-6
Applicable Cable : 16-22
AWG
Rated Current : 15.0A Max.



DF59M
For Battery Power
Low Profile 1pos.
Applicable Cable : 22-28
AWG
Rated Current : 6.0A Max.

Board-to-Board



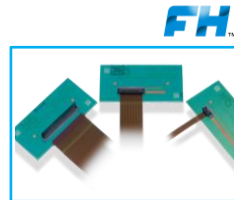
FX30B
For Battery Power
Floating Design
Pitch : 3.81/7.62mm
Stacking Height :
20.0-30.0mm
11.0mm (Coplanar, Right Angle)
No. of Pos. : 2-5
Rated Current : 25.0A Max.

Waterproof



HR30
IP67/IP68 Waterproof
Push-Pull Type
No. of Pos. : 3-12
Applicable Cable : 26-30
AWG
Rated Current : 5.0A Max.

FPC/FFC



FH52K
For BMS
Bottom Contact, Front Flip
Pitch : 0.5/1.0mm
Height : 2.0mm
Depth : 5.7mm
No. of Pos. : 6-80
Rated Current : 0.5A



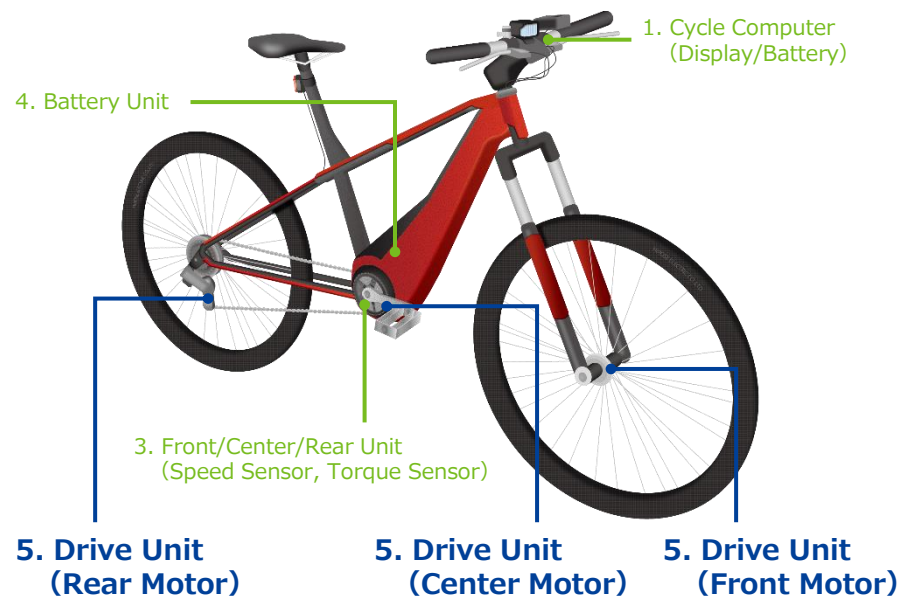
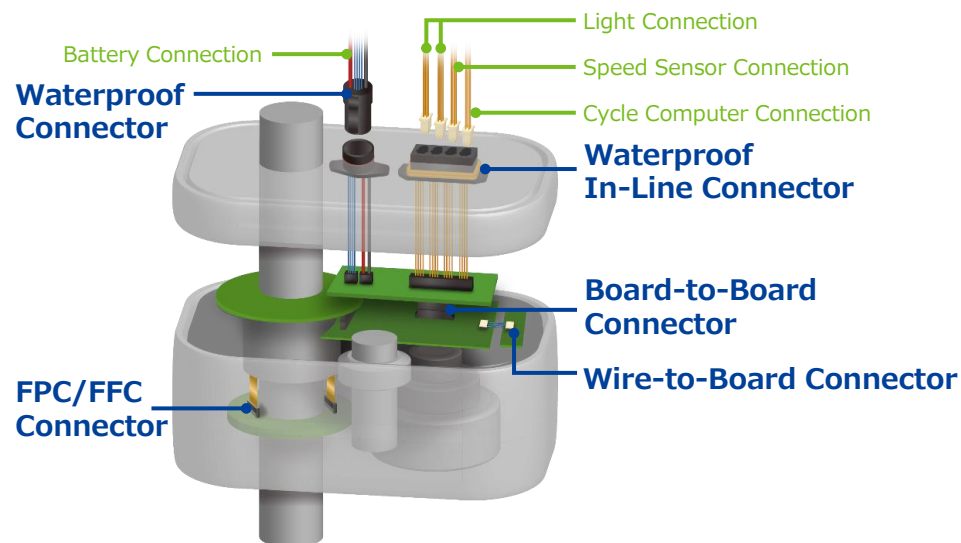
FH34
Top & Bottom Contact
Back Flip
Pitch : 0.5mm
Height : 1.0mm
Depth : 3.8mm
No. of Pos. : 4-50
Rated Current : 0.5A



FH62/FH72
For Display
One Action Lock
Pitch : 0.25/0.3mm
Height : 1.1/0.9mm
Depth : 4.0/3.5mm
No. of Pos. : 13-61/11-31
Rated Current : 0.3A



FH63S
For Display
One Action Lock
Pitch : 0.5mm
Height : 2.8mm
Depth : 5.15mm
No. of Pos. : 10-40
Rated Current : 0.5A



5. Drive Unit (Front/Center/Rear Motor)

Wire-to-Board



DF63
Positive Lock
In-Line Type Available
Pitch : 3.96/7.92mm
No. of Pos. : 1-6
Applicable Cable :
16-22 AWG
Rated Current :
15.0A Max.



ZE05
125°C & High Vibration
Resistance
Pitch : 2.0mm
No. of Pos. : 2-24
Applicable Cable :
20-22 AWG
Rated Current :
5.0A Max.



GT50
125°C & High Vibration
Resistance
Pitch : 1.0mm
No. of Pos. : 2-16
Applicable Cable :
28 AWG
Rated Current :
2.0A Max.

Board-to-Board



FX23/FX23L
Floating Design
Pitch : 0.5mm
Stacking Height :
8-30mm
No. of Pos. : 20-120
Rated Current :
3.0A (Power)
0.5A (Signal)

FPC/FFC



FH67
For Sensor
125°C Resistance
One Action Lock
Pitch : 0.5mm
Height : 5.2mm
Depth : 3.57mm
No. of Pos. : 10-40
Rated Current : 0.5A

Waterproof



BH12
IPX6/IPX7 Waterproof
Power Hybrid
No. of Pos. : 3, 4
Applicable Cable :
14-16 AWG (Power)
22-24 AWG (Signal)
Rated Current :
20.0A (Power)
1.0A (Signal)



HR30
IP67/IP68 Waterproof
Push-Pull Type
No. of Pos. : 3-12
Applicable Cable :
26-30 AWG
Rated Current :
5.0A Max.



DF62W
For Signal
IP67 Equivalent
Pitch : 2.2mm
No. of Pos. : 2-9
Applicable Cable :
20-26 AWG
Rated Current :
5.0A Max.

Waterproof In-Line



DF63W
IP67 Waterproof
Pitch : 3.96mm
No. of Pos. : 2-5
Applicable Cable : 16-22 AWG
Rated Current : 14.0A Max.