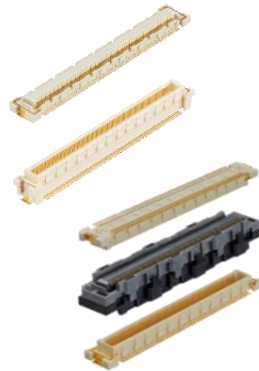
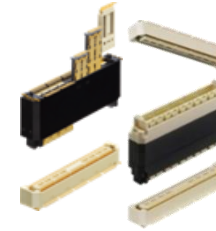


## High Speed SMT Connectors (Mezzanine)

**FX10 Series**

**10+Gbps (2-Pieces)**  
**15+Gbps (3-Pieces)**  
**High Speed Transmission**

- Pitch: 0.5mm
- Impedance: 85&100Ω
- Stacking Height: 4, 5mm
- No. of Pos.: 80-168pos.

**XG1 Series**

**16+Gbps**  
**High Speed Transmission**

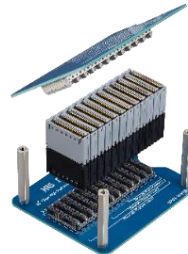
- Pitch: 0.5mm
- Multiple Blades for Differential 85&100Ω, Single-ended and Power
- Stacking Height: 20-23mm (2-piece)  
30-42mm (3-piece)
- No. of Pos.: 78-260pos.

## High Speed BGA Connectors (Mezzanine)

**IT5 Series**

**25+Gbps**  
**High Speed Transmission**

- Designed with optimal signal integrity and the unique, effective floating design of the IT3 Series
- The Helix Interposer with HRS Original FEXT Cancellation Technology prevents noise
- Stacking Height: 14-40mm
- No. of Pos.: 100, 200, 300pos.

**IT8 Series**

**28+Gbps (2-Pieces)/56+Gbps (3-Pieces)**  
**High Speed Transmission**

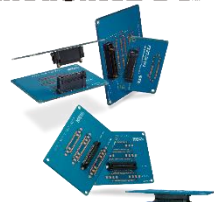
- New design realizes low stacking height and floating mechanism (2-piece)
- HRS original FEXT cancellation technologies and quasi-coaxial design enable ultra high speed signal transmission
- Stacking Height: 10-13mm (2-piece), 14-46mm (3-piece)
- No. of Pos.: 120, 192, 288pos.

**IT14 Series**

**56+Gbps**  
**112+Gbps PAM4**  
**High Speed Transmission**

- Low profile and hermaphroditic design reduces part management
- Protective housing that encapsulates the contact tips prevents warping during mating.
- Contact Protection Design
- Stacking Height : 5.0mm
- No. of Pos. : 688

## High Speed Transmission Board-to-Board SMT Connector (Mezzanine, Vertical, Coplanar )

**FunctionMAX™****FX23/FX23L Series****8+Gbps****High Speed Transmission**

- Pitch: 0.5mm
- Floating Design for Mounting Flexibility
- Stacking Height: 8-30mm
- No. of Pos.: 20-120 (Signal)  
4 (Power)
- Orientation: Mezzanine, Vertical

**FunctionMAX™****FX18 Series****10+Gbps****High Speed Transmission**

- Pitch: 0.8mm
- Multi-function Contacts for Power, Ground and Sequential Connections
- Stacking Height: 10-30mm (2-pieces)  
25-45mm (3-pieces)
- No. of Pos.: 40-180
- Orientation: Mezzanine, Coplanar, Vertical

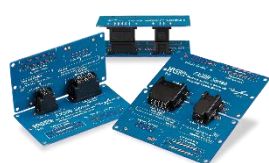
**FunctionMAX™****ER8 Series****10+Gbps****High Speed Transmission**

- Pitch: 0.8mm
- Smooth Insertion & High Mating Reliability
- Stacking Height: 7-12mm
- No. of Pos. : 10-140
- Orientation: Vertical, Coplanar, Mezzanine

**IT9 Series****28+Gbps****High Speed Transmission**

- Pitch: 0.5mm
- Floating Design
- No. of Pos. : 84, 152, 224
- Orientation: Vertical

## Power Connector

**FunctionMAX™****FX30B Series****Rated Current: 25A Max.**

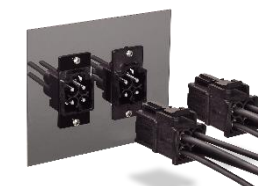
- Stacking Height: 20-30
- No. of Pos.: 2-5
- Floating Design

**EnerBee™****IT-P Series****Rated Current: 60A Max.**

- Stacking Height: 10-44mm
- Floating 3-piece Design for Mounting Flexibility
- No. of Pos.: 2

**EnerBee™****DF60 Series****Rated Current: 65A Max.**

- No. of Pos.: 1-6
- Pitch: 10.16mm
- Applicable Cable : 8, 10, 12 AWG
- HRS Original independent 5-point contact design secures high contact reliability

**EM35M Series****Rated Current: 70A Max.**

- No. of Pos. : 4pos.  
(Three phase power source + ground)
- Applicable Cable : 8-10 AWG
- Quick and secure Snap-On lock
- Configuration: DIN rail mount & Panel mount