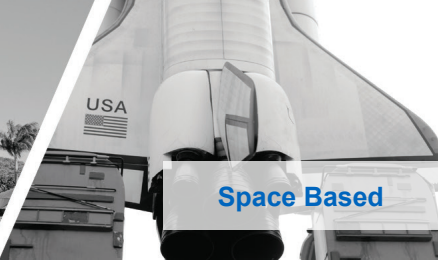


Markets



Backshells | **Amphenol Pcd**

Learn more at backshellworld.com



Complete Interconnect Solutions

Within Amphenol's wide range of interconnect products is a full range of backshell hardware. Customers can take advantage of Amphenol's global synergy for connectors, backshells and cable harnessing with one place for all their interconnect needs. Coming to Amphenol for a custom design of a backshell, means that customers benefit from the vast amount of experience this global company has in designing interconnect solutions.

Mathew Tharakan

mtharakan@amphenolpcd.com

Office: 978.624.3469 • Mobile: 508.932.2214

Jason Wooley

jwooley@amphenolpcd.com

Office: 978.624.3512 • Mobile: 978.325.0230

FOLLOW US



Amphenol Pcd

72 Cherry Hill Dr. • Beverly, MA. 01915

978.624.3400 • info@amphenolpcd.com

www.amphenolpcd.com

Backshell Overview

Amphenol Backshells are available in multiple types for a variety of applications.

- Wide range of products to cover different needs
- MIL/QPL qualification: SAE – AS 85049
- Custom design options

Military Specifications

Specifications	Series/ Class	Connector
MIL-DTL-38999	III, IV	L
MIL-DTL-83723	I, III	J
MIL-DTL-38999	I, II	K
MIL-DTL-5015	MS340, MS345	J
MIL-C-81703	3	J
MIL-DTL-26482	2	J

Cadmium Alternate Finishes

Amphenol now offers alternative Backshell finishes that meet RoHS/ REACH requirements and are environmentally friendly.

- Zinc Nickel
- Nickel Fluorocarbon (Durmalon)



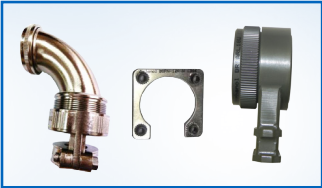
Composite

- For lightweight applications
- Rugged and durable
- Expanded QPL listing
 - M85049/91
 - M85049/92
 - M85049/93



Dust Caps

- Added new QPL listings
- Specifications
 - D38999/32 & 33
 - MS3180 & MS3181
 - MS25042 & MS25043
- Series/ Class
 - MIL-DTL-D38999 III
 - MIL-DTL-26482
 - MIL-DTL-5015



Specials

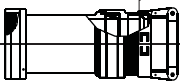
- Radius Profile - applications requiring controlled cable bending viz Fiber optic, Quadrax cable etc.
- Ultra Lowe Profile – cable routing thru very limited space. Less than 1" profile
- Nut Plates – hold connectors with flange holes. No more worries of losing nuts!



Green Materials

- Environmentally friendly
- Meets RoHS/REACH
- Expanded QPL listing
- Cadmium Alternate Finishes
 - Zinc Nickel
 - Nickel Fluorocarbon (Durmalon)

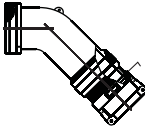
Angle/Profile



Straight Backshells



90° Angled Backshells



45° Angled Backshells

Coupling Style



Spin



Self Lock



Direct

Backshell Family



Non-Environmental Backshell



Environmental Backshell



Non-Environmental EMI/RFI Backshell



Environmental EMI/RFI Backshell



Shrink Boot Adapter



Crimp Ring Adapter



Band Lock Adapter



Pre-Shield Adapter



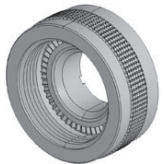
SQ Adapter



Strain Relief Clamps



Lamp Thread Adapter



Grommet Nut



Quick Clamp