

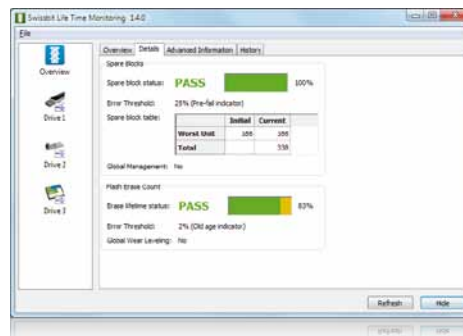
SECURITY AND MONITORING FEATURES

Security & Monitoring Features designed for Industrial Flash Products together with Application and Programming Libraries (API/DLL).



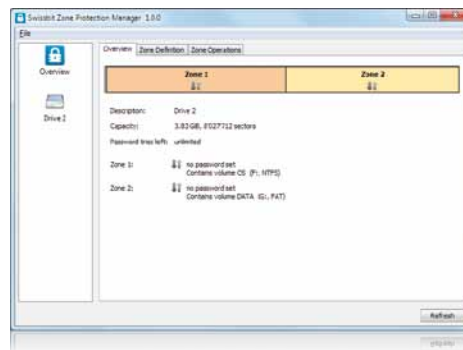
Life Time Monitoring (LTM)

The Swissbit LifeTimeMonitoring (SBLTM) feature enables users to access the devices detailed life time status and allows predicting imminent failure and thus avoiding unexpected data loss. This feature uses an extended S.M.A.R.T. (Self-Monitoring, Analysis and Reporting Technology) interface or vendor specific commands to retrieve the Flash product information.



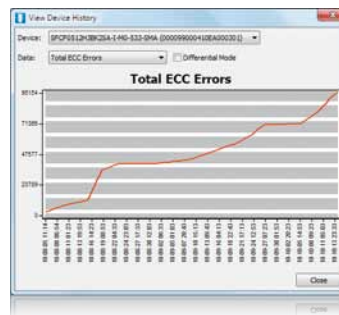
ZONE PROTECTION

The device allows configuring multiple zones with either no protection, write protection or access protected settings. Each zone is secured with a separate password. A Windows tool or a programming library is available, the latter allowing easy integration of the Swissbit ZoneProtection functionality into customer applications.



FAST ERASE

This feature uses an uninterruptable sequence of single block erase commands for fastest possible destruction of user data. Even a power-off cannot stop the process which will continue after power restoration.





LONGEVITY

**CONTROLLED
BOM**











**POWER FAIL
PROTECTION**

**CUSTOMER
SERVICE**

QUALITY

EXPERIENCE



SD / MMC CARDS				
S-300U	<input type="radio"/>	<input type="radio"/>	<input type="radio"/>	
S-200U	<input checked="" type="radio"/>	<input type="radio"/>	<input type="radio"/>	
S-200/220	<input checked="" type="radio"/>	<input type="radio"/>	<input type="radio"/>	
M-100	<input checked="" type="radio"/>	<input type="radio"/>	<input type="radio"/>	
COMPACTFLASH™ CARDS				
C-300	<input checked="" type="radio"/>	<input type="radio"/>	<input type="radio"/>	
C-320	<input checked="" type="radio"/>	<input type="radio"/>	<input type="radio"/>	
C-400	<input checked="" type="radio"/>	<input type="radio"/>	<input type="radio"/>	
SSD 2.5" PATA & SATA				
P-120	<input checked="" type="radio"/>	<input type="radio"/>	<input type="radio"/>	
X-200	<input checked="" type="radio"/>	<input type="radio"/>	<input type="radio"/>	
SATA SSD & CFAST™ CARDS				
X-200M	<input checked="" type="radio"/>	<input type="radio"/>	<input type="radio"/>	
X-200S	<input checked="" type="radio"/>	<input type="radio"/>	<input type="radio"/>	
F-100	<input checked="" type="radio"/>	<input type="radio"/>	<input type="radio"/>	
F-200	<input checked="" type="radio"/>	<input type="radio"/>	<input type="radio"/>	
USB FLASH STORAGE				
miniTWIST II	<input checked="" type="radio"/>	<input type="radio"/>	<input type="radio"/>	
unitedCONTRAST II	<input checked="" type="radio"/>	<input type="radio"/>	<input type="radio"/>	
USB FLASH MODULE U-110	<input checked="" type="radio"/>	<input type="radio"/>	<input type="radio"/>	

● default implemented; ◐ on request; ○ not available;

SWISSBIT SALES LOCATIONS WORLDWIDE

EMEA / APAC

Swissbit AG
 Industriestrasse 4
 CH-9552 Bronschhofen
 Switzerland
 Tel. +41 71 913 03 03
 Fax +41 71 913 03 15
 industrial@swissbit.com

North & South America

Swissbit NA
 117 E Plaza Drive Unit E Suite 105 / 205
 Eagle, Idaho 83616
 USA
 Tel. +1 208 938 4525
 Fax +1 914 935 9865
 sales@swissbitna.com

Japan

Swissbit Japan Inc.
 4F, 2-40-16 Umesato
 Sugunami-ku, Tokyo 166-0011
 Japan
 Tel. +81 3 33 17 12 11
 Fax +81 3 33 17 12 22
 industrial@swissbit.co.jp

WWW.SWISSBIT.COM